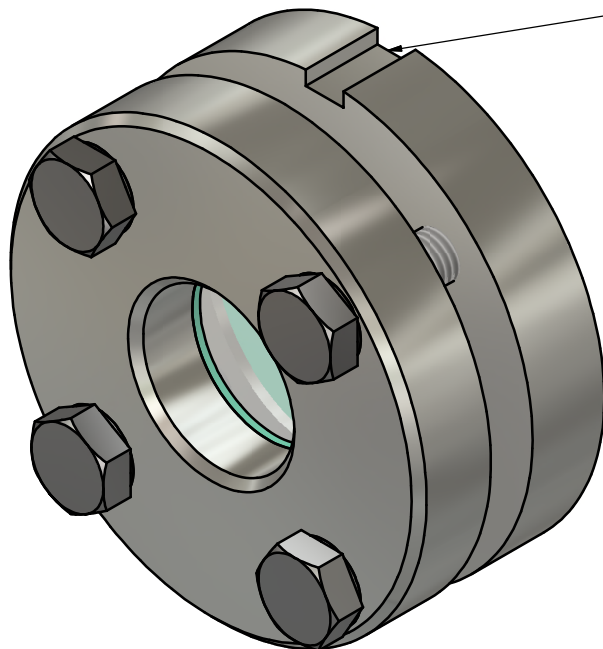


Nut ähnlich DIN 11851 für Hakenschlüssel  
Groove similar to DIN 11851 for hook spanner



<p>Weitergabe sowie Vervielfältigung dieser Zeichnung, Verwertung und Mitteilung des Inhalts sind verboten, soweit nicht ausdrücklich gestattet. Zuwiderhandlungen verpflichten zu Schadenersatz. Alle Rechte für/oder Geschmacksmustereintragung vorbehalten. (Schutzvermerk ISO 16016 beachten)</p> <p>Passing on as well as duplication of this drawing, utilization and communication of a content are forbidden, as far as not expressly permitted. Offences obligate to compensation. All rights reserved for/or design registration. (Notice protective note ISO 16016)</p>				<p>Maße ohne Toleranzangabe nach DIN ISO 2768-1 mK / Oberflächenangaben nach DIN ISO 1302</p> <p>Measures without Tolerances according to DIN ISO 2768-1 mK / Surface details according to DIN ISO 1302</p>				<div><div><div><div></div><div>K</div></div></div></div> <p>Maßstab Scale</p> <p>1 : 1</p>		<p>Gewicht Weight</p> <p>2.5 kg</p>	
								<p>Material: Material: gem. Auftrag / acc. to order</p>			
<div><div><div>8</div><div></div><div></div><div></div></div><div><div>7</div><div></div><div></div><div></div></div><div><div>6</div><div></div><div></div><div></div></div><div><div>5</div><div></div><div></div><div></div></div><div><div>4</div><div></div><div></div><div></div></div><div><div>3</div><div></div><div></div><div></div></div><div><div>2</div><div></div><div></div><div></div></div><div><div>1</div><div></div><div></div><div></div></div></div>				<div><div><div>Date</div><div>Name</div></div><div><div>Gezeichnet</div><div>12.07.2022</div><div>Koslowski</div></div><div><div>Kontrolliert</div><div>12.07.2022</div><div>Koslowski</div></div><div><div></div><div></div><div></div></div><div><div></div><div></div><div></div></div></div>				<p>Kundenzzeichnung customer drawing</p> <p>Typ 392 G 1 1/2" PN 40 Schauglas</p>			
<div><div><div>ACI INDUSTRIARMATUREN</div><div>Königsalp 19</div><div>62428 Jülich</div><div>www.aci24.com</div><div>info@aci24.com</div></div><div><div>ACI</div><div>INDUSTRIARMATUREN</div></div></div>				<div><div>Revision</div><div>Version</div></div> <div><div>0</div></div>				<div><div>K-392-112-40</div></div> <div><div>1 / 1</div><div>A3</div></div>			
<div><div>Status</div><div>Changes</div><div>Date</div><div>Name</div></div>											